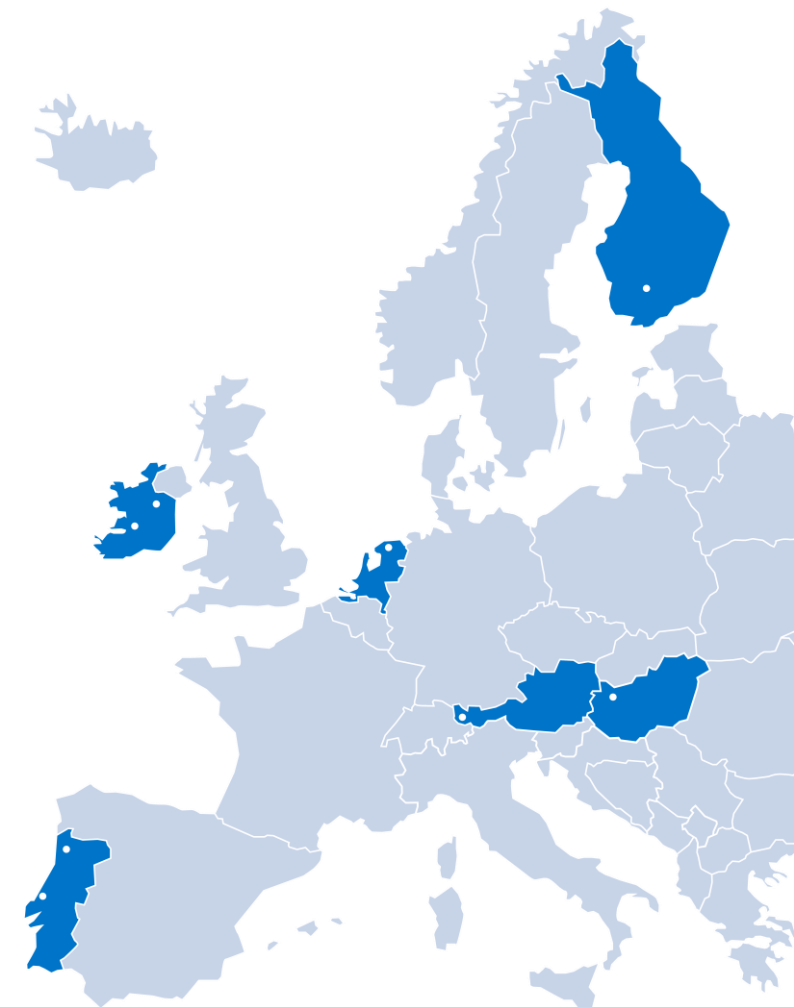


# ENCONTRO INTERNACIONALIZAÇÃO DA EDUCAÇÃO E FORMAÇÃO

NUNO RODRIGUES – POLITÉCNICO DE LEIRIA  
05 MAIO 2022

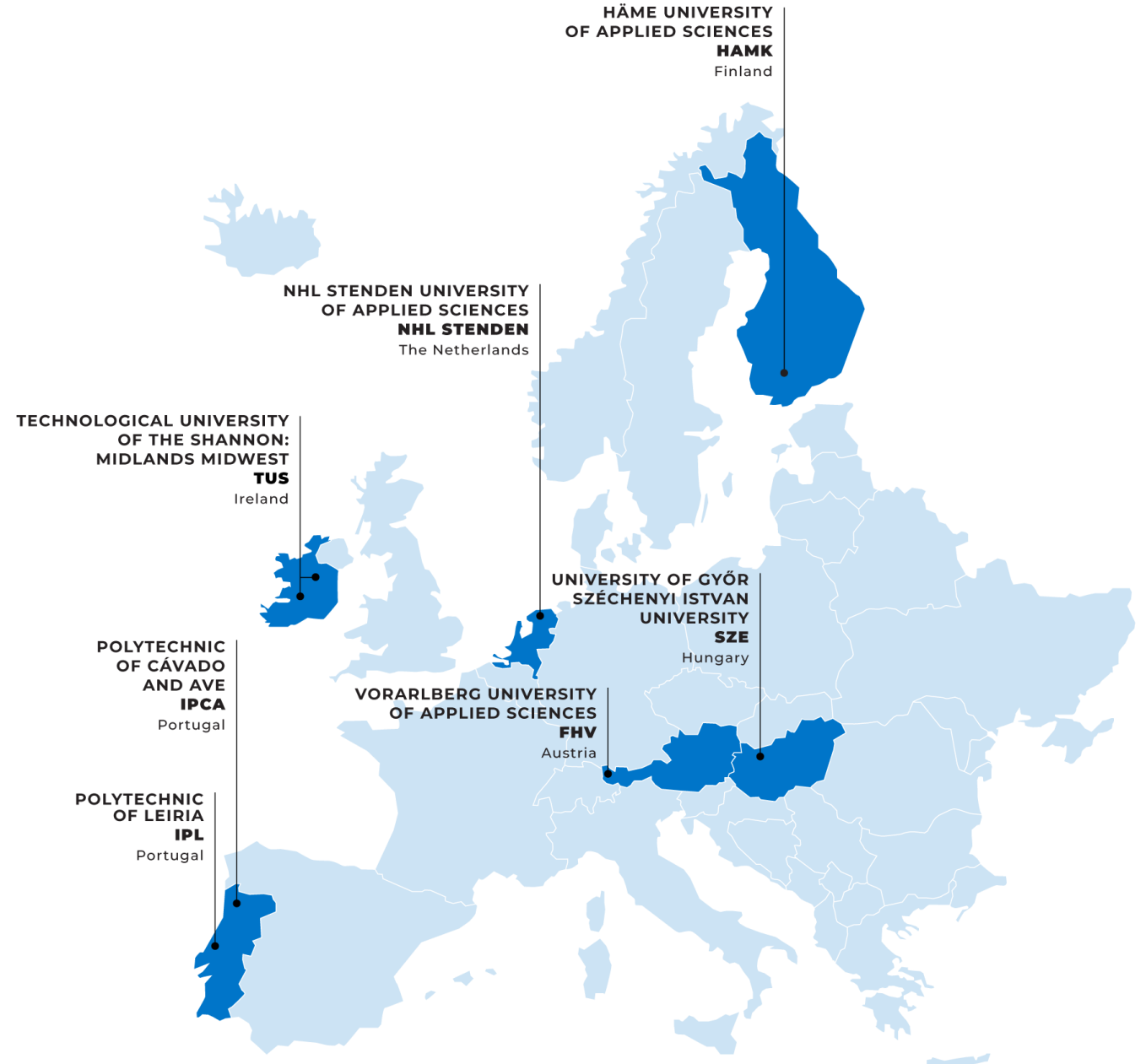


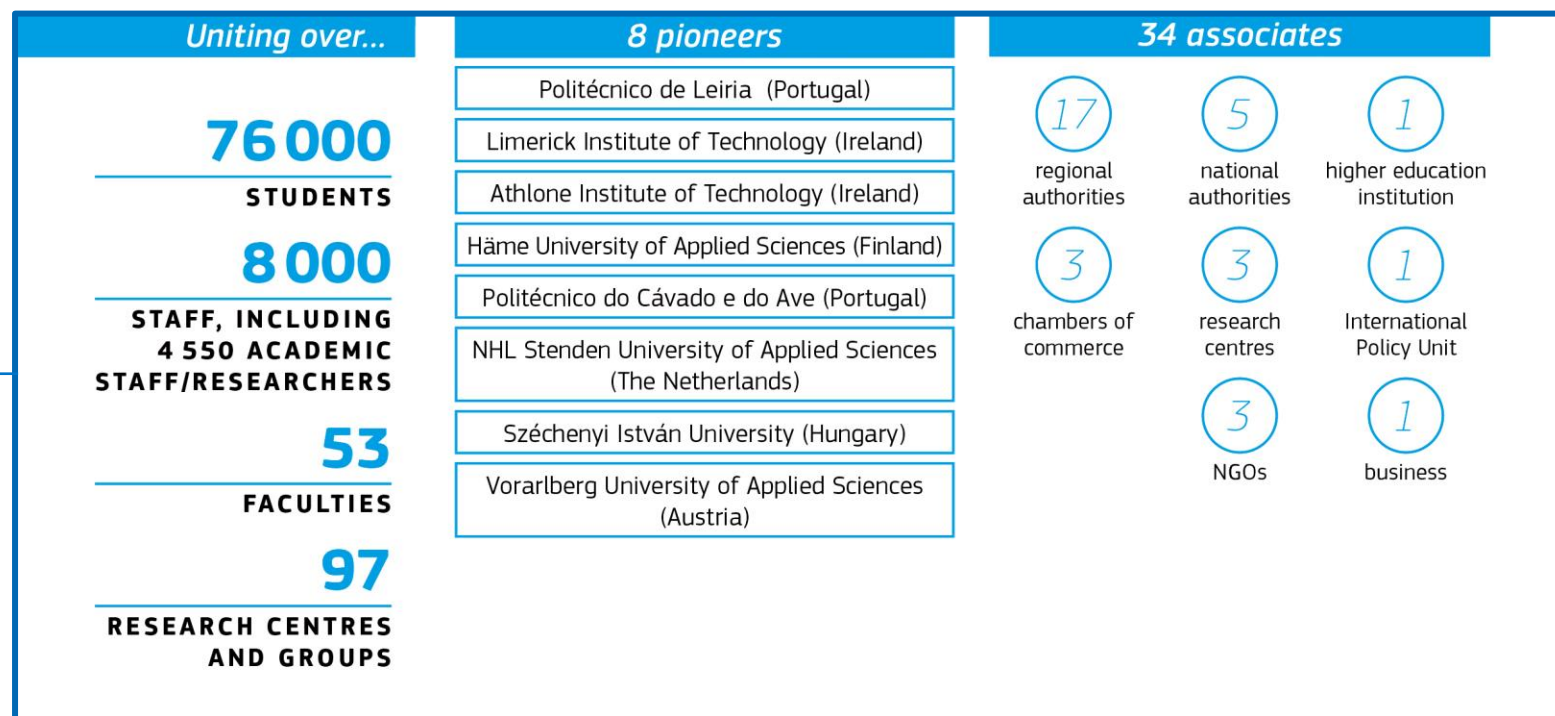
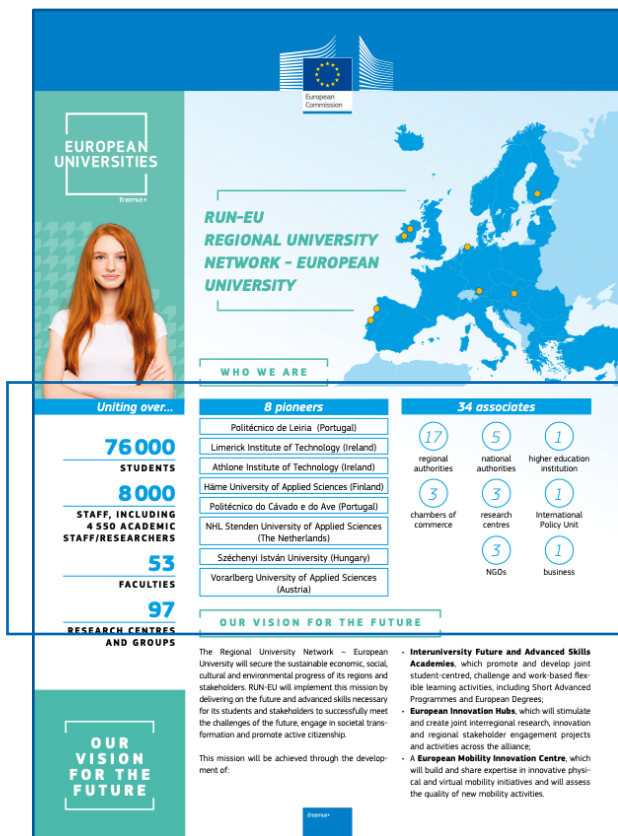
# THE REGIONAL UNIVERSITY NETWORK (RUN-EU)

## Member Characteristics

- *Regional location and focus*
- *Driving regional development*
- *Future skills & new knowledge*
- *Reflect all regions of Europe*

[www.run-eu.eu](http://www.run-eu.eu)







# MISSION AND VISION

[www.run-eu.eu](http://www.run-eu.eu)

**Foster excellence and  
innovation in higher  
education**

ensuring the core principles and values  
of the EU

**Delivering future  
and advanced skills**

necessary for students and regional stakeholders  
to successfully meet the challenges of the future,  
engage in societal transformation and promote  
active citizenship

**Improve national  
and international  
competitiveness  
of associated regions**

**Allowing them to:**

complement existing capital and large city-regions;  
retain and attract young talent;  
correct existing unfavorable bias in development  
trends in peripheral regions of the European Union.



# MISSION AND VISION

Strive to secure the sustainable economic, social, cultural and environmental progress

of associated regions and stakeholders

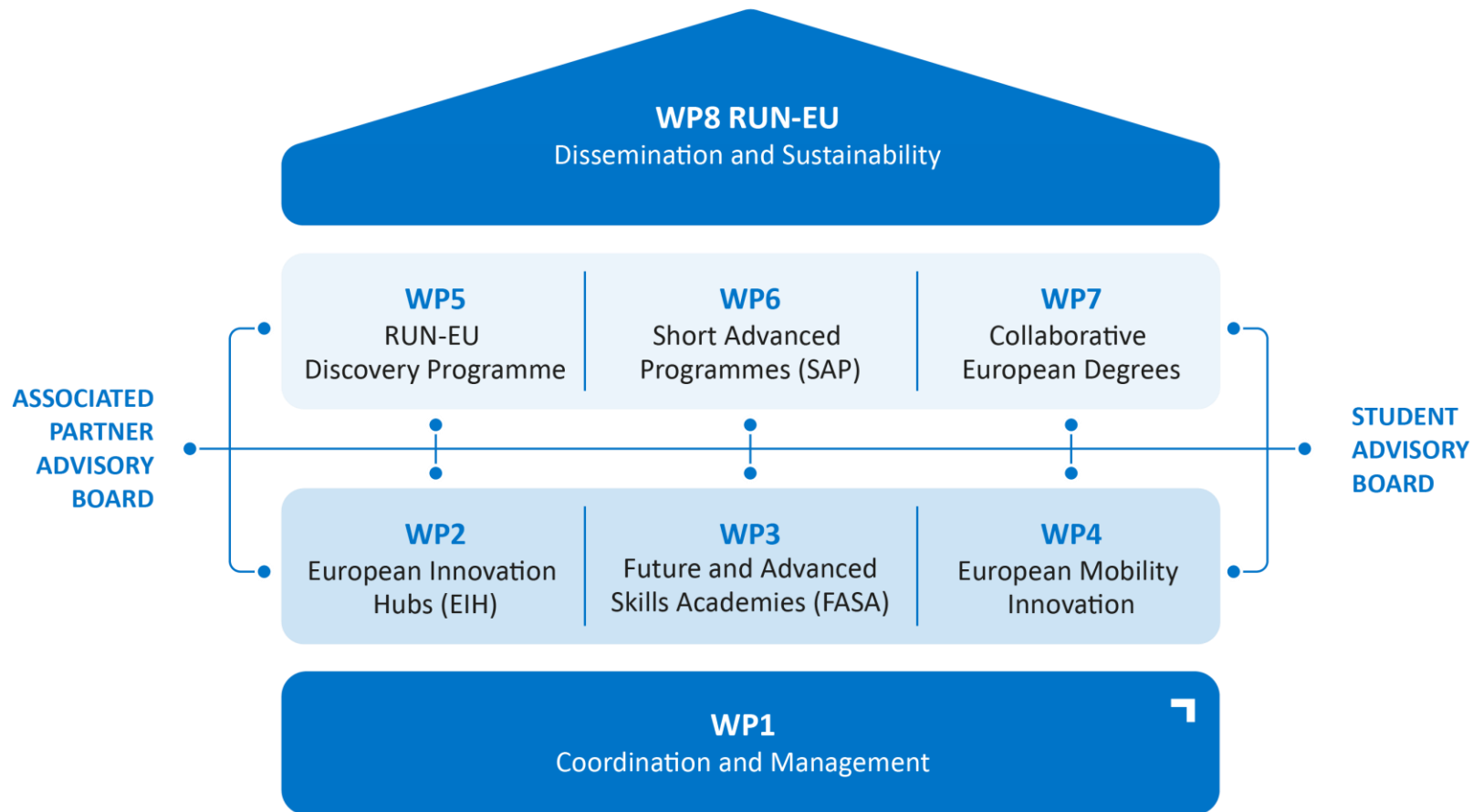
Address big societal challenges and become a true engine of regional development

leading in the creation of a new type of multinational interregional alliance

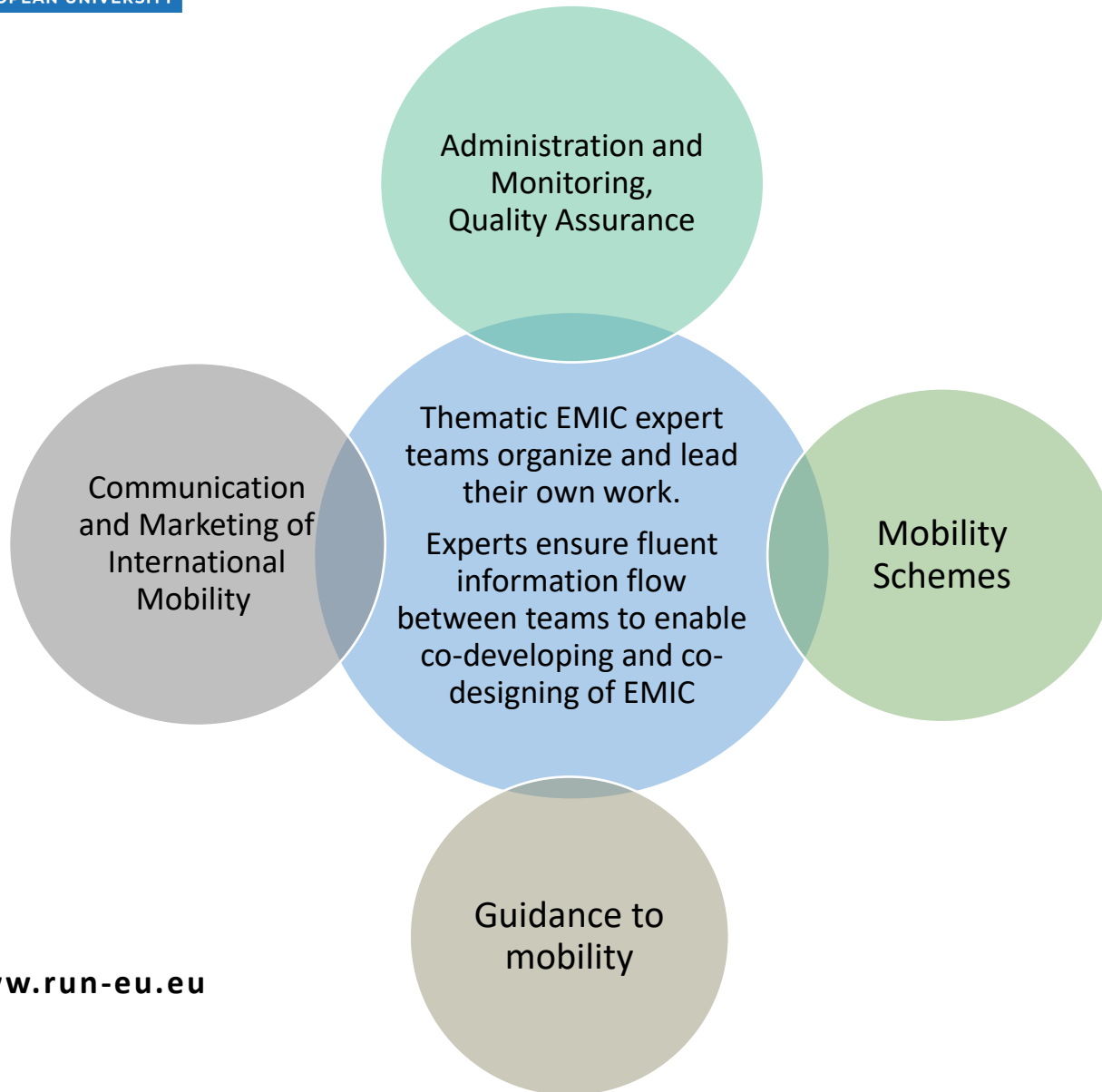
**European Zone for Interregional Development (EZ-ID)**



# “OUR STUDENTS WILL INHERIT THE FUTURE”



## EUROPEAN MOBILITY INNOVATION CENTRE



### Supportive Group

The Supportive Group is jointly responsible for the strategic mobility innovation development and overall operation of EMIC. EMIC developments and operations are integrated in each university.

Each experts' team has a coach(es) from Supportive Group who supports and guides the work when needed.

Supportive Group brings the expert teams together, facilitates joint work by utilizing versatile participatory working methods. The Supportive Group involves SABs, APs and other experts to contribute to the development of EMIC. Supportive Group also supports further professional competence development of the mobility experts.

Supportive Group consists of Heads of International Affairs (or other relevant appointment persons) from RUN-EU members, as well as the RUN-EU WP4 lead. Members of the Supportive Group ensure that the experts in the teams have the required expertise and have possibilities (incl. personnel resources) to engage in constructing EMIC.

# FASA FUTURE AND ADVANCED SKILLS ACADEMIES

SHORT  
ADVANCED  
PROGRAMMES

COLLABORATIVE  
EUROPEAN DEGREES

## INPUTS

Outputs of European  
Innovation Hubs

Interaction with  
regional stakeholders  
and advisory boards

Societal and labour  
market requirements/  
Skills Bulletins

Transnational curricula  
development teams

International innovations  
and best practices

## FUTURE AND ADVANCED SKILLS ACADEMIES

Course development  
and delivery

Innovative pedagogical  
approaches and assessment  
methodologies

Assessment of quality  
and relevance of RUN-EU  
Programmes

Operating across  
the regional university  
at both central  
and institutional level  
thus promoting integration

## OUTCOMES

Student-centred curricula  
  
Flexible pathways designed  
for reskilling, upskilling  
and life-long learning

Transdisciplinary and  
transnational curricula  
focused on emerging  
challenges and societal  
issues

SAPs and Collaborative  
European Degrees

Innovative pedagogies  
promoting excellence  
in education and research

Challenge and work-based  
learning

Development of digital and  
other innovative platforms



# ONGOING AND UPCOMING SAPs

- “Future Explorations”
- “Preventing the Social Exclusion of Young People”
- “Go for a Digital Product”
- “Smart Everything”
- “Challenging Game Development”

[www.run-eu.eu](http://www.run-eu.eu)





## GEM ENGINEERING AT FHV

### Results

- Participants very enthusiastic and motivated to work with each other on the Goals of RUN-EU
- Development of a number of Double Degree Programmes planned
- Development of several SAPs planned
  - Please motivate your colleagues to participate

[www.run-eu.eu](http://www.run-eu.eu)





# DOUBLE DEGREE PROGRAMME IN INTERNATIONAL BUSINESS

HÄME UNIVERSITY OF APPLIED SCIENCES,  
HAMK

VORARLBERG UNIVERSITY OF APPLIED  
SCIENCES, FHV

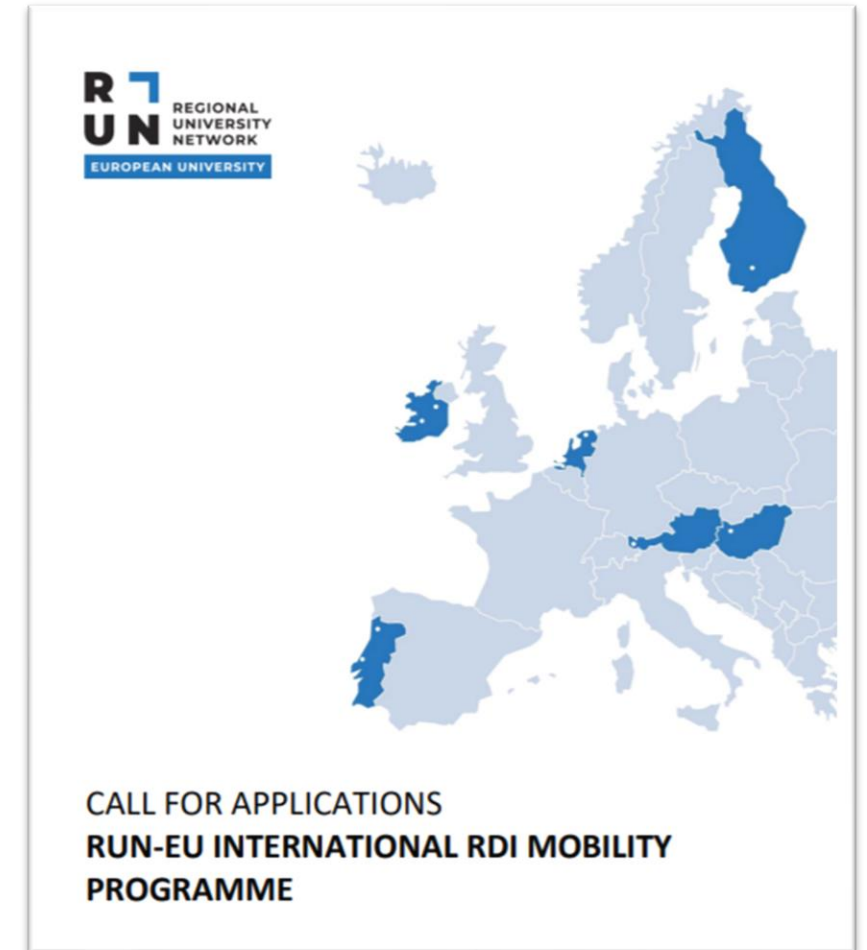


# WP5 – RUN DISCOVERY PROGRAMME

## Research Grants – RUN-EU International RDI Mobility Programme

### Three types of activities:

- i) 4-week mobility for research staff - 9 grants (per univ.)
- ii) 12-week mobility for research staff – 3 grants (per univ.)
- iii) 4-week mobility for research and postgraduate students - 9 grants (per univ.)



## WP5 RUN DISCOVERY PROGRAM

### Targets :

- RUN-EU research framework of research skills and infrastructure
- Future-looking joint RDI teams are created aligned to the Horizon Europe Pillar 2 Clusters
- RDI internship mobility actions;
- 15 joint research and innovation projects;

[www.run-eu.eu](http://www.run-eu.eu)

### RUN-EU 8 future-looking joint RUN-EU RDI teams



# EUH EUROPEAN INNOVATION HUBS

FUTURE INDUSTRY  
AND REGIONAL SUSTAINABLE  
DEVELOPMENT

THE BIOECONOMY

SOCIAL INNOVATION

## INPUTS

Existing  
National and Regional  
Innovation Clusters

RUN-EU  
Discovery Programme

Regional stakeholder  
and associated partner  
engagement  
and requirements

International Innovations

## EUROPEAN INNOVATION HUBS

Multinational R&I Units  
with shared infrastructures  
and teams

Oriented towards UN SDG,  
RIS3 and meeting future  
challenges

Three EIHs to be established  
in the future:

- Future Industry  
and Sustainable  
Regional Development
- Bioeconomy
- Social Innovation

## OUTCOMES

Cutting edge inter-university  
research opportunities

Collaborative  
challenged-based  
international research teams

Collaborative Masters,  
PHD and Short Advanced  
Programmes

Interregional Collaboration  
and global competitiveness

Enhanced links between  
teaching, research and  
innovation

Identification of future and  
advanced skills needs

Regional environmental and  
inclusive social policies



## Horizon 2020 CSA

*“Support for the Research and Innovation Dimension of European Universities”*

Professional research programmes for business and society

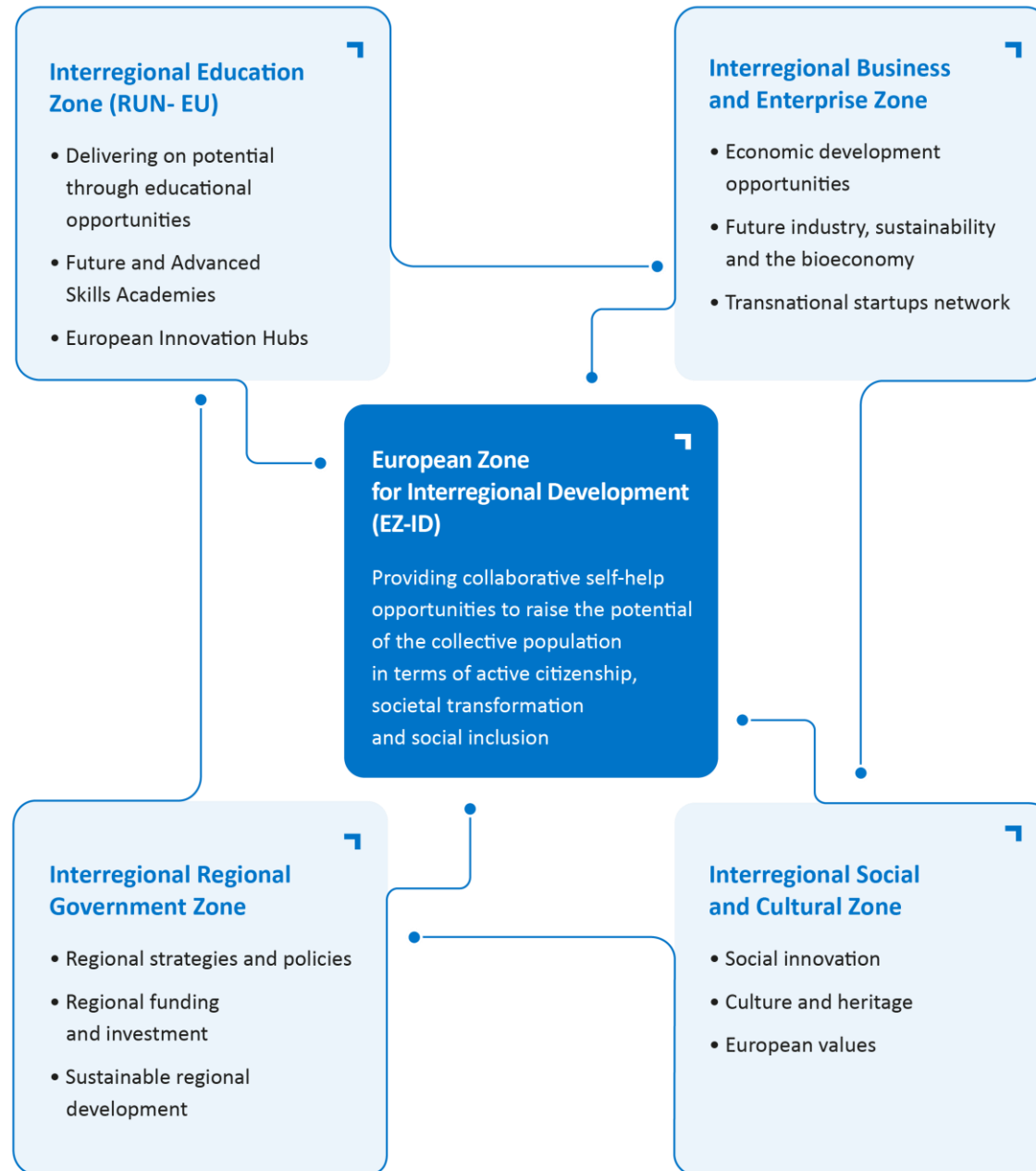
Common R&I agenda and stronger academic-business partnerships

Strengthen human capital in R&I

Mainstreaming of open science practices and skills

*The graduates from the RUN-EU+ research degree programmes will be expected to be leaders of change and enablers of societal transformation within their regions*

# RUN-EU & A EUROPEAN ZONE FOR INTERREGIONAL DEVELOPMENT







# THANK YOU

